


Y U M E S P A  
*Dream Shampoo*







Elevating feminine beauty to new heights,  
with an unforgettable sensory experience.

True beauty comes from within, when the soul is at peace—  
With YUME SPA, your valued customers will experience  
a revolutionary shampoo treatment that unleashes their inner beauty.

Y U M E S P A  
*Dream Shampoo*

YUME SPA's full-flat chair and gentle mist  
deliver a dream-like experience,  
soothing not only to the hair and scalp, but also the soul.

A shampoo chair that is so relaxing it is literally sleep-inducing.

A mist that enhances the treatment and infuses the hair with moisture.

A professional shampooing technique that combines comfort and effectiveness.

To nurture healthy, luxurious hair, YUME SPA offers total care—  
not only for the hair and scalp but also the root of all beauty: the soul.







The unique *YUME SPA SYSTEM*  
provides an unforgettable sensory experience.



SPA MIST II microscopic mist processor

Offers complete control over  
mist temperature and quantity



YUME shampoo chair

Offers your customers  
unmatched comfort



YUME STOOL

Affords hairstylist complete  
freedom of movement

# YUME SPA

Three elements of the new services



## Benefits YUME SPA brings to your salon

### Builds loyal customers

Attract new customers while preserving profitability

#### First-time customer

YUME SPA's unique value-added services, which complement colouring and styling, will be more attractive for customers.

#### Repeat customer

First-time customers are more likely to return.

#### Loyal customer

Trust and attachment customers feel keeps them coming back. Each loyal customer attracts others, creating a success spiral.

### Shampooing space becomes sales creation space (increase in average spend per customer)

With the introduction of YUME SPA's menu of services, your shampooing space will begin generating profits like never before.

### Boosts over-the-counter sales

The combined soothing and beautifying effects of YUME SPA's unique services create satisfied customers who are more likely to buy home hair care products offered in the salon.

### Builds rapport

The sensory nature of the YUME SPA experience engenders trust and deepens communication between hairstylists and customers.





## EQUIPMENT SPA MIST II

Specialised equipment  
that provides total care

Warm mist envelops and permeates  
the hair, enhancing the performance  
of the treatment and soothing not only  
the hair and scalp, but also the soul.



# Control the temperature and quantity of mist— Helping you provide the best YUME SPA treatment

Spa Mist II was developed with a focus on using the power of mist with its tremendous potential. An ultrasonic transducer, vibrating at 1.6 million times per second, generates a fine mist of microscopic water particles. The temperature and quantity of the mist can be freely controlled, enabling treatments to better permeate the hair and deepening the effect of relaxation.



Note: Image shows Open Mist used with Open Mist Ball Nozzle (optional).

## POINT 1

### Uniform heating for a consistent finish

Mist fills cap, infusing hair with moisture and uniform warmth, so treatment naturally permeates every strand.

## POINT 2

### Cooling sustains the treatment

The cooling function locks the treatment particles into the hair. The mist heating and cooling functions combine to give longer-lasting results.

## POINT 3

### Relaxation

Open Mist provides gentle heating for comfort, for a soothing, luxurious experience.

● BROWN ● BLACK ○ WHITE

DIMENSIONS: W295 x D375 x H1750 to 1200mm (with hose upright)

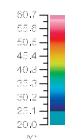


### Warmth creates comfort

- More easily allows hairstylist to give customer a comfortable shampoo and scalp treatment.
- Mist and warmth combine to relax customer.

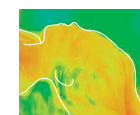


### Hair temperature change (during shampoo)



#### Without Open Mist

- Hair gradually cools, resulting in not only less lather but also cold lather.
- Customer feels cold.



#### With Open Mist

- More shampoo lather is generated and hairstylist's hands slide easily through hair.
- Customer gets a warm, comfortable feeling from faceline to behind the ear.



### Opens pores to clean scalp

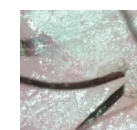
- Moisturising and heating opens pores, freeing scalp of keratotic plugs and debris.
- With minimal stress on scalp, keratotic plugs and debris are removed for a beautiful clean.



### State of pores and scalp

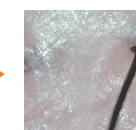


**Before treatment**  
Hardened sebum clogs pores.



8 minutes of heating, 48°C

**Mist heating**  
Moisture spreads throughout scalp, opening pores and liquefying sebum.



**After shampoo**  
Debris is removed and pores are open and clean.



### Penetrates deep into hair for longer-lasting effect

- Opens cuticle layers so treatment particles can go deep into hair.
- Cooling closes cuticles to keep hair healthy.



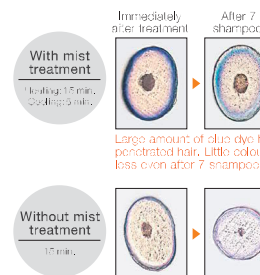
### Level of penetration and durability

Data 1, 2, and 3 are based on tests where dyeing capacity and level of penetration are assessed using acid dye on bundles of grey human hair.

#### Data 1: Surface comparison (after applying dye)

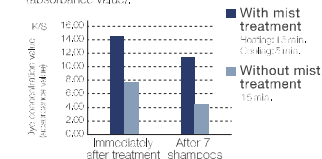


#### Data 2: Cross section comparison (after applying dye)



#### Data 3: Comparison of dyeing capacity and lasting strength

The hair bundle in Data 1 was measured with a spectrophotometer and a graph made using the K/S value, which is an equivalent of the dye concentration value (absorbance value).



Measuring the dye concentration by light absorption, a mist-treated hair bundle has higher dyeing capacity and greater durability just after treatment, even after seven shampoos, as compared to a hair bundle where the dye sets naturally.

\*Similar results were achieved with treatment agents.

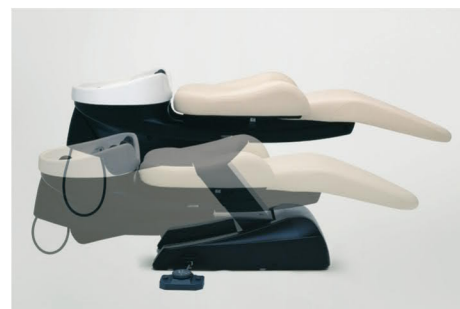
# EQUIPMENT YUME SERIES

Specialised equipment  
that provides total care

YUME SPA's luxurious full-flat chairs  
and strain-reducing neck device  
will make your customers feel so relaxed  
they will lose track of time.



Whether upright or fully reclined, YUME SPA's full-flat chairs offer  
such total comfort that your customers might never want to leave.



## Hairstylist can adjust chair to height that is right for them.\*

Chair smoothly moves up and down, raises and  
reclines without any jarring starting and stopping,  
so your customers remain totally relaxed.

\*YUME and YUME DX



## Adjustable leg rest\*

Angle of leg rest can be freely adjusted depending  
upon customer's preference and type of service.

\*YUME DX



The organic form combined with an ergonomic weight-dispersing cushioning system gently enfold the body, keeping your customer comfortable even for long periods.



Note: Picture shows neck device for backwash basin.

A soft neck cushion and two resilient head cushions offer three-point support to reduce neck strain. Your customers will feel like they are floating on air.



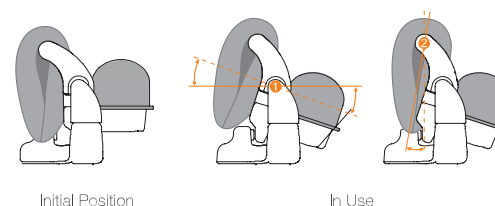
### YUME SPA exclusive “YUME STOOL” (optional)

Stool tilts forward and back, left and right, allowing user complete freedom of movement while seated—because the customer will only feel totally relaxed when the hairstylist is relaxed. Gas cylinder also allows for height adjustment.

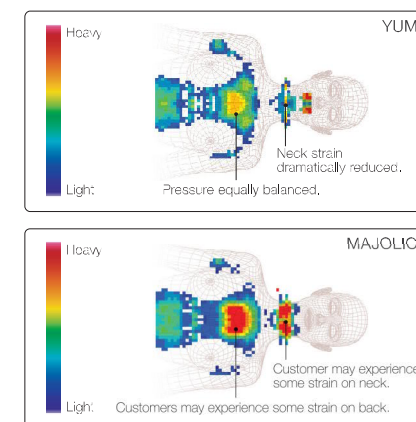
### How the neck device functions

First the neck device rotates on axis ①, then the cushion rotates on axis ② in accordance with the shape of the head. This two-axis design adjusts to the contours of the head and helps the customer maintain ultimate comfort.

[Side view of the neck device]



### Comparison of pressure distribution between YUME and MAJOLICA





### YUME DX

Total beauty model—  
for ultimate hospitality Electric



LUXURY YUME SPA	FACIAL CARE
MASSAGE	HAND & NAIL CARE

#### Basin unit

- Backwash basin<sup>1</sup>
- Adjustable height
- Height of neck position: 610-950mm

#### Chair

- Extra-wide 90° rotatable seat
- Integrated and removable headrest
- Adjustable leg rest

#### SEAT COLOUR

- IVORY [SH15]
- CAMEL [NL22]
- DARK BROWN [SH24]
- BLACK [SH1]
- BROWN [NL12]

DIMENSIONS: W760×D2000×H990mm (without rotation)  
W1670×D1500×H990mm (with 90° rotation)  
Minimum space requirements: W2700×L3000mm (with 90° rotation)

### YUME

Luxury model—for a supremely  
relaxing spa experience Electric



YUME SPA	HAND & NAIL CARE
----------	------------------

#### Basin unit

- Backwash basin<sup>1</sup>
- Adjustable height
- Height of neck position: 600-950mm

#### Chair

- Extra-wide seat

#### SEAT COLOUR

- IVORY [SH15]
- CAMEL [NL22]
- DARK BROWN [SH24]
- BLACK [SH1]
- BROWN [NL12]

DIMENSIONS: W760×D1986×H975mm

#### BASIC LINE



### YUME ESPOIR

Most stylish and technically versatile  
model—with two designs and an array of  
colours to choose from Electric

YUME SPA	MASSAGE
----------	---------

#### Basin unit

- Backwash basin<sup>2</sup> or sidewash basin<sup>2</sup>
- Height of neck position: Backwash unit: 800mm [H]  
Sidewash unit: 750mm [L], 775mm [M], 800mm [H]<sup>4</sup>

#### Chair

- Fixed or adjustable leg rest<sup>5</sup>

#### SEAT COLOUR (BASIC LINE)

- WHITE [NL1]
- DARK BROWN [NL24]
- BLACK [NL5]
- CAMEL [NL22]

#### SEAT COLOUR (PREMIUM LINE)

- IVORY [SH15]
- DARK BROWN [SH24]
- MAROON [SH7]
- BLACK [SH1]

#### UNIT COVER COLOUR

- BLACK [B]
- LUXE SILVER [S]

DIMENSIONS: W650×D1959×H930mm  
(Backwash basin/Basic Line/Height H/Fixed leg rest)

#### PREMIUM LINE



### YUME 和 (Nagomi)

Space-efficient model—  
combining comfort with efficiency Manual



#### LIGHT YUME SPA

#### Basin unit

- Backwash basin<sup>1</sup>
- Height of neck position: For seated operation: 820mm [L]  
For standing operation: 900mm [H]<sup>2</sup>

#### Chair

- Slide-out footrest

#### SEAT COLOUR

- WHITE [GL1]
- BLACK [GL2]
- DARK BROWN [GL3]
- MAROON [GL4]

DIMENSIONS: W660×D1640-1860×H930mm (Height H)

Note: Chair does not fully recline.



## YUME SWING

High-quality one-stop service—  
perfect for private rooms

[Manual](#)

YUME SPA	FACIAL CARE
MASSAGE	HAND & NAIL CARE
FOOT CARE	

### [ Basin unit ]

- Backwash basin<sup>2</sup> or sidewash basin<sup>3</sup>
- Height of neck position: 800mm

DIMENSIONS: W1348×D1024×H850mm (Backwash unit, rear layout)  
Minimum space requirements: W3000×L2200mm

Note: Chair sold separately

## YUME OASIS

Instantly transforms your styling area into  
a YUME SPA, for innovative and space-  
efficient one-stop service.

[Manual](#)

YUME SPA	FACIAL CARE
MASSAGE	HAND & NAIL CARE
FOOT CARE	

### [ Basin unit ]

- Backwash basin<sup>4</sup> or sidewash basin<sup>5</sup>
- Height of neck position: Backwash unit: 900mm  
Sidewash unit: 800mm

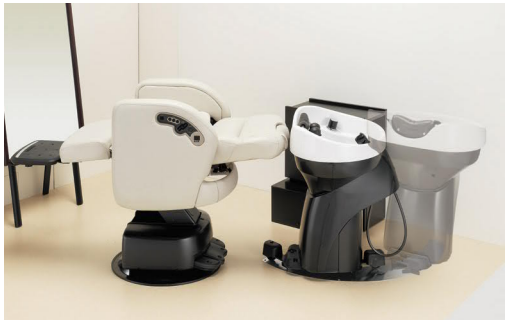
### UNIT COVER COLOUR

- WHITE [WH]   ● BLACK [BK]   ● DARK BROWN [DB]  
● CHAMPAGNE GOLD [CG]   ● DEEP NAVY [NV]   ● RED [RD]

DIMENSIONS: W500×D596×H931mm (Backwash unit)

Note: Chair and floor unit: sold separately

Shampoo position



Note: Photo shows rear layout.

Shampoo position



### Floor unit

Shampooing possible when  
basin unit is positioned  
above and connected  
to floor unit.



## Stools



## YUME STOOL

Stool tilts 360° allowing  
free movement.

DIMENSIONS: W415×D415×H485-672mm



## ESPOIR STOOL

Stool tilts forward and  
back freely.

DIMENSIONS: W360×D390×H74-680mm



## M-STOOL

Stool tilts forward and  
back, with carry handle  
and casters.

DIMENSIONS: W360×D443×H660-705mm

<sup>1</sup>For seated or standing operation from rear <sup>2</sup>For seated operation from rear <sup>3</sup>For standing operation from side and seated operation from rear <sup>4</sup>Selectable at purchase <sup>5</sup>Leg rest and backrest move simultaneously. <sup>6</sup>For standing operation from rear <sup>7</sup>For standing operation from side

# TECHNIQUE

## Original services that leverage the power of mist

Tried-and-tested techniques that relax the body and optimise the effect of mist on hair and scalp.

### YUME SPA Original Services



#### Cleansing

OPEN MIST

Unclogs pores that shampoo cannot, leaving scalp feeling clean and refreshed.



#### Mist Heating

Warm mist further removes sebum, while warm wash aids circulation. Enhances relaxation.



#### Shampooing

OPEN MIST

Warm mist and thick shampoo lather deliver an unforgettable sensory experience.



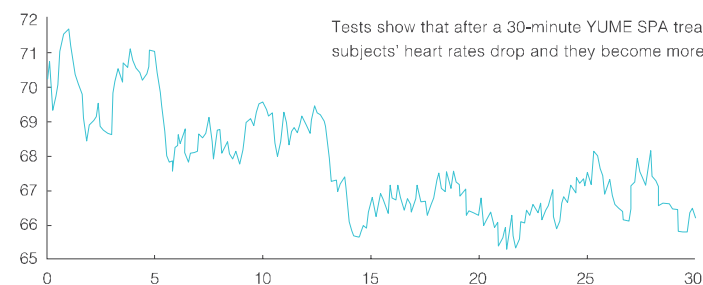
#### Massage

OPEN MIST

Warming of scalp during head massage relieves tension, leaving customer feeling thoroughly relaxed.

\*For details, please refer to technical manual and instructional videos.

### Change in test subjects' heart rates over course of 30-minute YUME SPA



Tests show that after a 30-minute YUME SPA treatment, subjects' heart rates drop and they become more relaxed.

Vertical axis: average heart rate Horizontal axis: Time N=24 According to a 2011 Takara Belmont study



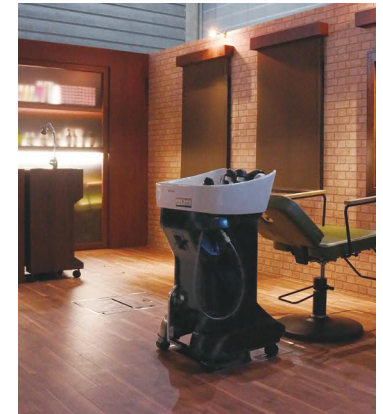
# ENVIRONMENT

Spaces that offer  
ultimate comfort

From the moment they step into this  
sensory space, your customers' process of  
healing begins, making them want to  
return again and again.



*YUME Series-equipped hair salons and spas*





## TAKARA BELMONT GROUP

JAPAN	TAKARA BELMONT CORPORATION, OSAKA HEADQUARTERS Tel: +81-6-6212-3523 E-mail: <a href="mailto:beauty@takara-net.com">beauty@takara-net.com</a> Web: <a href="http://www.takarabelmont.co.jp/global/">www.takarabelmont.co.jp/global/</a>
U.S.A.	TAKARA BELMONT USA, INC. Tel: +1-732-469-5000 E-mail: <a href="mailto:webmaster@takarabelmont.com">webmaster@takarabelmont.com</a> Web: <a href="http://www.takarabelmont.com">www.takarabelmont.com</a>
CANADA	TAKARA COMPANY, CANADA, LTD. Tel: +1-905-822-2755 Toll-free: +1-800-268-5351 Web: <a href="http://www.takarabelmont.ca">www.takarabelmont.ca</a>
BRAZIL	TAKARA BELMONT PARA AMERICA DO SUL INDUSTRIA E COMERCIO DE MOVEIS LTDA. Tel: +55-11-3147-4040 E-mail: <a href="mailto:takbel@takarabelmont.com.br">takbel@takarabelmont.com.br</a> Web: <a href="http://www.takarabelmont.com.br">www.takarabelmont.com.br</a>
U.K.	TAKARA BELMONT (UK) LTD. Tel: +44-20-7515-0333 E-mail: <a href="mailto:hairdressing@takara.co.uk">hairdressing@takara.co.uk</a> Web: <a href="http://www.takara.co.uk">www.takara.co.uk</a>
GERMANY	TAKARA BELMONT FRANKFURT OFFICE Tel: +49-69-2972-8090 E-mail: <a href="mailto:info@takara-belmont.de">info@takara-belmont.de</a> Web: <a href="http://www.takara.co.uk">www.takara.co.uk</a>
KOREA	TAKARA BELMONT (KOREA) CORPORATION Tel: +82-2-413-5977 E-mail: <a href="mailto:info@takarabelmont.co.kr">info@takarabelmont.co.kr</a> Web: <a href="http://www.takarabelmont.co.kr">www.takarabelmont.co.kr</a>
TAIWAN	TAKARA BELMONT (TAIWAN) CORPORATION Tel: +886-2-8789-0809 E-mail: <a href="mailto:takara.tw@msa.hinet.net">takara.tw@msa.hinet.net</a> Web: <a href="http://www.takara-tw.com">www.takara-tw.com</a>
CHINA	TAKARA BELMONT (SHANGHAI) CORPORATION Tel: +86-21-6272-8166 E-mail: <a href="mailto:takara-china@takarabelmont.com.cn">takara-china@takarabelmont.com.cn</a> Web: <a href="http://www.takarabelmont.com.cn">www.takarabelmont.com.cn</a>
SINGAPORE	TAKARA BELMONT SINGAPORE PTE.LTD. Tel: +65-6316-1110 E-mail: <a href="mailto:hairdressing@takarabelmont.sg">hairdressing@takarabelmont.sg</a> Web: <a href="http://www.takarabelmont.sg">www.takarabelmont.sg</a>

- Actual colour may differ from colour in printed catalogue.
- The manufacturer reserves the right to change models, descriptions, and specifications without prior notice.